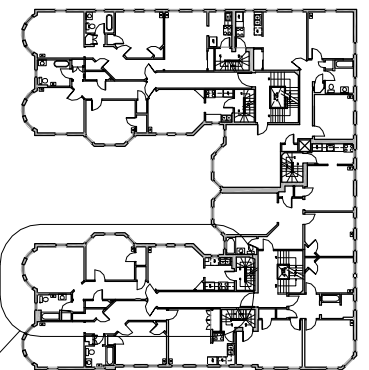


I CERTIFY TO THE BEST OF MY KNOWLEDGE, INFORMATION AND BELIEF THAT THIS PLAN FULLY AND ACCURATELY DEPICTS UNIT 57-21, THE LAYOUT OF THE UNIT, ITS LOCATION, DIMENSIONS, APPROXIMATE AREA, MAIN ENTRANCE AND IMMEDIATE COMMON AREA TO WHICH IT HAS ACCESS, AS BUILT



**KEY PLAN**  
SCALE: 1" = 50'-0"  
AREA OF ENLARGED PLAN

**SECOND FLOOR PLAN (UNIT 57-21)**

SCALE: 3/32" = 1'-0"

PROJECT:

**57-59 MAGAZINE STREET  
CONDOMINIUM**  
57-59 MAGAZINE STREET  
CAMBRIDGE, MA 02139

**CRAMER & LEVINE**  
ARCHITECTS  
134 EAST MAIN STREET  
NORTON, MA 02766  
TEL (508) 230-2466 FAX (774) 265-1811

DRAWN BY:

tm

NUMBER:

2-21

JOB # 04-072

DATE: 1/3/06

CAD FILE: