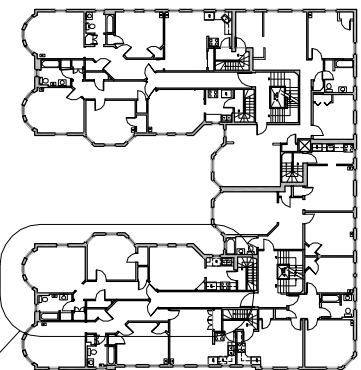


I CERTIFY TO THE BEST OF MY KNOWLEDGE, INFORMATION AND BELIEF THAT THIS PLAN FULLY AND ACCURATELY DEPICTS UNIT 57-31, THE LAYOUT OF THE UNIT, ITS LOCATION, DIMENSIONS, APPROXIMATE AREA, MAIN ENTRANCE AND IMMEDIATE COMMON AREA TO WHICH IT HAS ACCESS, AS BUILT



**KEY PLAN**

SCALE: 1" = 50'-0"

AREA OF ENLARGED PLAN

**THIRD FLOOR PLAN (UNIT 57-31)**

SCALE: 3/32" = 1'-0"

PROJECT:

**57-59 MAGAZINE STREET  
CONDOMINIUM**  
57-59 MAGAZINE STREET  
CAMBRIDGE, MA 02139

DRAWN BY:

tm

NUMBER:

**3-31**

JOB #

04-072

DATE:

1/3/06

CAD FILE:

**3-31**

**CRAMER & LEVINE**

ARCHITECTS



134 EAST MAIN STREET  
TEL (508) 230-2466

NORTON, MA 02766  
FAX (774) 265-1811