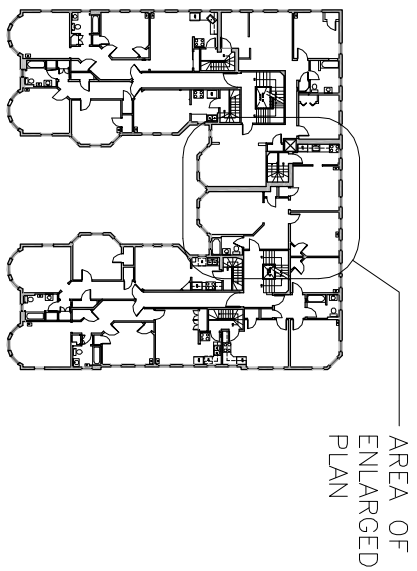


I CERTIFY TO THE BEST OF MY KNOWLEDGE, INFORMATION AND BELIEF THAT THIS PLAN FULLY AND ACCURATELY DEPICTS UNIT 57-34, THE LAYOUT OF THE UNIT, ITS LOCATION, DIMENSIONS, APPROXIMATE AREA, MAIN ENTRANCE AND IMMEDIATE COMMON AREA TO WHICH IT HAS ACCESS, AS BUILT



KEY PLAN

SCALE: 1" = 50'-0"

THIRD FLOOR PLAN (UNIT 57-34)

SCALE: 1/8" = 1'-0"

CRAMER & LEVINE ARCHITECTS
 134 EAST MAIN STREET
 TEL (508) 230-2466
 NORTON, MA 02766
 FAX (774) 265-1811

PROJECT:

57-59 MAGAZINE STREET CONDOMINIUM
57-59 MAGAZINE STREET
CAMBRIDGE, MA 02139

DRAWN BY: tm

NUMBER:

JOB # 04-072

DATE: 1/3/06

CAD FILE:

3-34